



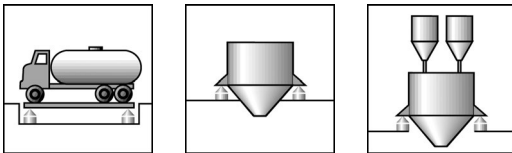
C16A... 100/200/400 t

Self-centering
pendulum load cells



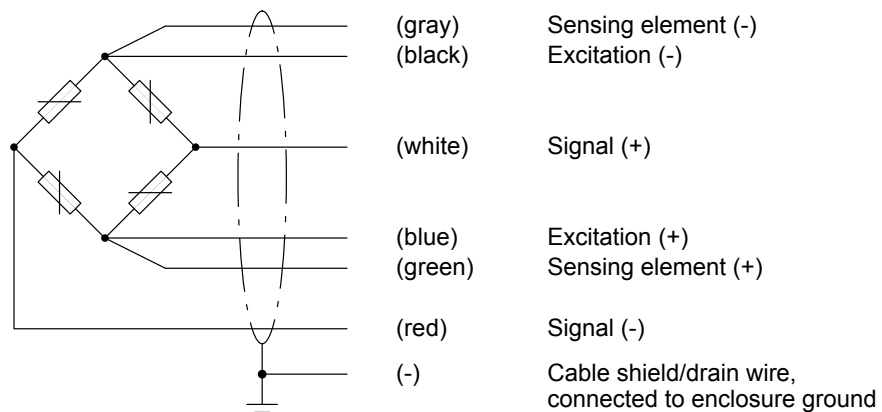
Special features

- Self-restoring function
- Nominal (rated) loads: 100 t, 200 t and 400 t
- Simple installation
- Rust-resistant materials, laser-welded, IP68
- Optimized for parallel connection by off-center load compensation
- Meets EMC requirements as per EN 45501
- Ex-protection design as per ATEX (optional)

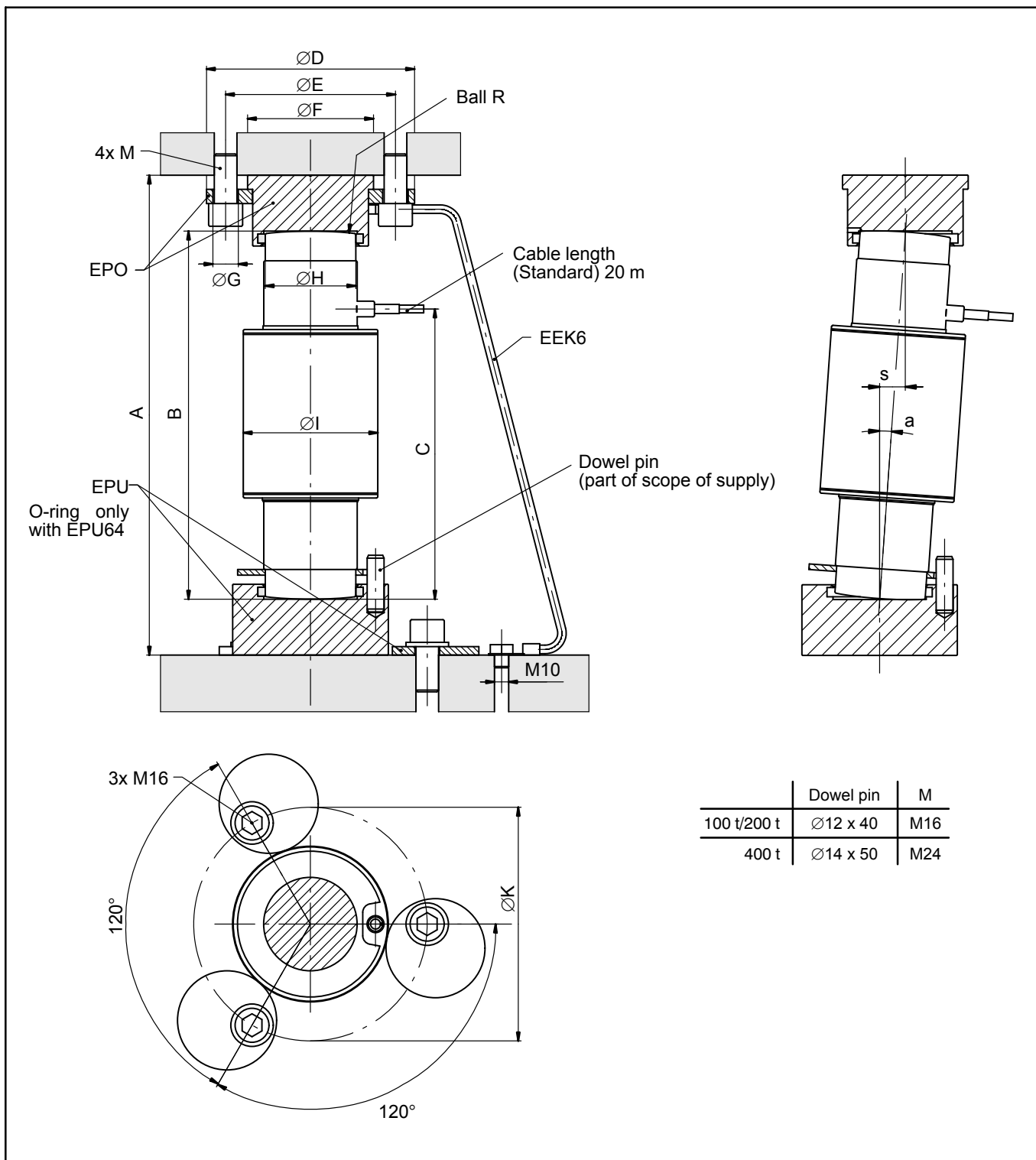


Cable assignment

Cable assignment (six-wire configuration):



Dimensions and mounting depth



	Dowel pin	M
100 t/200 t	$\varnothing 12 \times 40$	M16
400 t	$\varnothing 14 \times 50$	M24

Nominal (rated) load	Thrust pieces top + bottom (1 set = 2 pieces)	A	B	C	$\varnothing D$	$\varnothing E$	$\varnothing F$	$\varnothing G$	$\varnothing H$	$\varnothing I$	$\varnothing K$	R	$a_{max}^{1)}$	$s_{max}^{2)}$	$F_R^{3)}$	
															at s_{max}	at $s = 1 \text{ mm}$
100 t 200 t	EPO3/100 t, C16/EPU64	339	260	205	147	120	89	18	64	95	165	290	4°	18	8.6	0.48
		± 1.5											2°	9	7.3	0.81
400 t	EPO3/400 t, C16/EPU109	412	260	205	240	196	160	26	109	154	230	570	2°	9	11.8	1.31

1) max. permissible misalignment

3) Restoring force in % of applied load

2) max. permissible lateral displacement of load application

Specifications

Type				C16A D1			C16A C3
Nominal (rated) load	E_{max}		100 t	200 t	400 t	100 t	
Accuracy class per OIML R60			D1 (0.0330 %)			C3 (0.0170 %)	
Number of scale intervals	n_{LC}		1000 (10000 NTEP III LM)	1000		3000	
Minimum load cell verification interval	v_{min}	% of E_{max}	0.0200 (0.0068 NTEP III LM)	0.0200		0.0100	
Nominal (rated) sensitivity	C_n	mV/V	2				
Sensitivity tolerance ¹⁾		%	±0.5				
Temperature coefficient of sensitivity ²⁾	TK_C	% of	±0.0250			±0.0080	
Temperature coefficient of zero signal	TK_0	$C_n/10$ K	±0.0285			±0.0140	
Relative reversibility error ²⁾	d_{hy}		±0.0330			±0.0170	
Non-linearity ²⁾	d_{lin}	% of C_n	±0.0300			±0.0180	
Load creep in 30 min.	d_{cr}		±0.0330			±0.0167	
Input resistance	R_{LC}		700 ±20				
Output resistance ¹⁾	R_0	Ω	706 ±3.5				
Reference excitation voltage	U_{ref}		5				
Nominal (rated) range of the supply voltage	B_U	V	0.5 ... 12				
Insulation resistance	R_{is}	GΩ	> 5				
Nominal (rated) ambient temperature range	B_T		-10 ... +40				
Operating temperature range	B_{tu}	°C	-30 ... +70				
Storage temperature range	B_{tl}		-50 ... +85				
Limit load	E_L		150				
Breaking load	E_d	% of E_{max}	> 350	> 200	> 300	> 350	
Relative permissible oscillatory stress (oscillation width as per DIN 50100)	F_{srel}		70				
Nominal (rated) displacement at E_{max} , approx.	s_{nom}	mm	1.57	2.15	2.64	1.57	
Weight without cable, approx.	G	kg	8	10.8	22.0	8	
Degree of protection per EN60529 (IEC529)			IP68 (test conditions 1 m water column / 100 h) IP69 K (water at high pressure, steam cleaner)				
Material: Measuring body+ housing Cable entry Seal Cable sheath			Stainless steel ³⁾ Stainless steel ³⁾ Viton® Thermoplastic elastomer				

¹⁾ Because of the off-center load compensation, the sensitivity and output resistance are matched in such a way that when there is eccentric loading, the scale display is within the permissible error limits.

²⁾ The values for non-linearity (d_{lin}), relative reversibility error (d_{hy}) and temperature coefficient of sensitivity (TC_S) are recommended values. The sum of these values is within the cumulative error limit for $p_{LC} = 0.7$ according to OIML R60.

³⁾ as per EN 10088-1

Options:

- **Overvoltage protection** (not possible with Ex protection)
- **Ex protection versions as per ATEX:**
 - II 2 G Ex ia IIC T4 and T6 (Zone 1) *)
 - II 3 G Ex nA II T6 (Zone 2)
 - II 2 D Ex tD A21 IP68 T80 °C (Zone 21) *)
 - II 3 D Ex tD A22 IP68 T80 °C (Zone 22 for non-conductive dust)
 - II 2 G EExd IIC T6 (Zone 1) *) see separate data sheet

*) with EC Type Approval Test Certificate

- **40 m cable**

Accessories (to be ordered separately):

- **EPO3/100t** Thrust piece for top, incl. clamping ring (100t and 200t)
- **C16/EPU64** Thrust piece for bottom, incl. 3 eccentric discs (100t and 200t)
- **EPO3/400t** Thrust piece for top, incl. clamping ring (400t)
- **C16/EPU109** Thrust piece for bottom, incl. 3 eccentric discs (400t)
- **EEK6** Ground cable, 600mm long

Subject to modifications.
All product descriptions are for general information only. They
are not to be understood as a guarantee of quality or durability.

Hottinger Baldwin Messtechnik GmbH

Im Tiefen See 45 · 64293 Darmstadt · Germany
Tel. +49 6151 803-0 · Fax: +49 6151 803-9100
Email: info@hbm.com · www.hbm.com

measure and predict with confidence

