

1. 1-HLC...-1 Technical data:

技术参数 (Technical data)	单位 (Unit)	HLC_1D1	HLC_1C3
精确度等级 (OIML R60)		D1	C3
额定载荷 Emax (Max. capacity)	kg	550,1100,1760	
最小检定分度值 (V _{min})	% of Emax	0.0285	0.0090 (550kg,1.1t) 0.0100 (1.76t)
灵敏度 (Sensitivity)	mV/V	1.94	1.94
灵敏度误差 (Sensitivity tolerance)	%	±0.5000	±0.1000
温度对零点影响 (TC Zero)	% of Cn/10K	±0.0400	±0.0127(550kg,1.1t) ±0.0140(1.76t)
温度对灵敏度影响 (TC Span)	% of Cn/10K	±0.0500	±0.0140
非线性误差 (Non-linearity)	% of Cn	±0.0500	±0.0170
滞后误差 (Hysteresis error)	% of Cn	±0.0500	±0.0170
蠕变及蠕变恢复 (30mins)(Creep, MDLR)	%/30min	±0.0500	±0.0166
零点平衡 (Zero balance)	mV/V	0±0.01	
输入电阻 (Input resistance)	Ω	>350	
输出电阻 (Output resistance)	Ω	350±0.12	
参考电压 (Uref)	V	5	
工作电压范围 (Bu)	V	5...15	
绝缘电阻 (Insulation resistance)	G Ω/100V	>5	
额定温度范围 (Nominal temperature rang)	℃	-10~+40	
工作温度范围 (Service temperature range)	℃	-30~+70	
存储温度范围 (Storage temperature range)	℃	-50~+85	
安全承载 (Safe load limit)	% of Emax	150	
侧向侧载 (Lateral load limit)	% of Emax	100	
破坏载荷 (Breaking load)	% of Emax	300	
允许动态载荷 (Permissible dynamic load) (according to DIN 50100)	% of Emax	70	
最大载荷下变形量 (Deflection at Max. capacity), approx.	mm	0.5	
重量 (Weight approx.)	kg	0.9	
保护等级 (IP)		IP68	
Material: 弹性体 (Measuring element) 电缆连接 (Cable fitting) 电缆护套 (Cable-sheath)		Stainless steel Stainless steel/Sealing:Viton PVC	

253700-7003EA

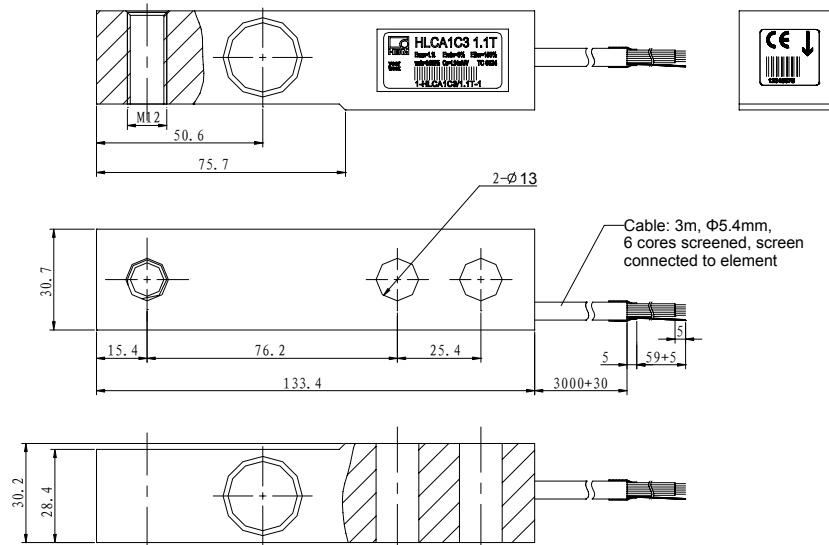
Page -1-

2. 1-HLC...-1 Part Number Description

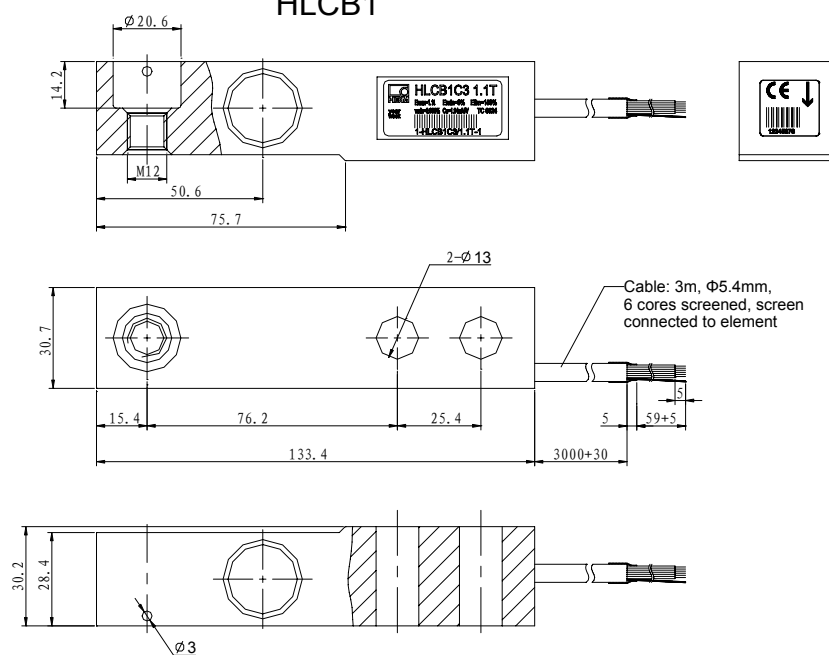
Part Number	Description	Detailed description
1-HLCA1D1/550KG-1	HLCA1D1/550kg	LC HLCA1/550KG, D1
1-HLCA1D1/1.1T-1	HLCA1D1/1.1t	LC HLCA1/1.1T, D1
1-HLCA1D1/1.76T-1	HLCA1D1/1.76t	LC HLCA1/1.76T, D1
1-HLCA1C3/550KG-1	HLCA1C3/550kg	LC HLCA1/550KG, C3
1-HLCA1C3/1.1T-1	HLCA1C3/1.1t	LC HLCA1/1.1T, C3
1-HLCA1C3/1.76T-1	HLCA1C3/1.76t	LC HLCA1/1.76T, C3
1-HLCB1D1/550KG-1	HLCB1D1/550kg	LC HLCB1/550KG, D1
1-HLCB1D1/1.1T-1	HLCB1D1/1.1t	LC HLCB1/1.1T, D1
1-HLCB1D1/1.76T-1	HLCB1D1/1.76t	LC HLCB1/1.76T, D1
1-HLCB1C3/550KG-1	HLCB1C3/550kg	LC HLCB1/550KG, C3
1-HLCB1C3/1.1T-1	HLCB1C3/1.1t	LC HLCB1/1.1T, C3
1-HLCB1C3/1.76T-1	HLCB1C3/1.76t	LC HLCB1/1.76T, C3

3. 1-HLC...-1 Mounting dimension

HLCA1



HLCB1



Cable:

Shielded 6-core round cable(7/0.16mm) with PVC-jacket

Wiring code:

Excitation voltage+:	blue
Excitation voltage-:	black
Signal+:	white
Signal-:	red
Sen+:	green
Sen-:	grey
Shield:	blank, connect to element

253700-7003EA

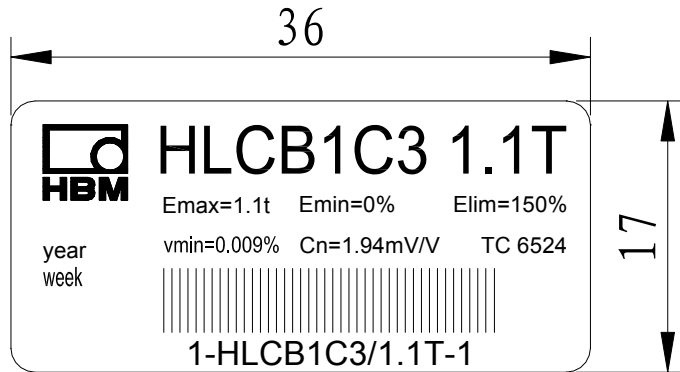
Page -3-

Vers.: b Ausg.:25356

Date:2005-12-20

4. Label:

4.1 Type label (according to drawing No.: 530.00-3072.4)



SAP Part Number	Type	Emax	Emin	Elim	vmin	Cn	TC Number
1-HLCA1D1/550KG-1	HLCA1D1 550KG	550kg	0%	150%	0.0285%	1.94mV/V	TC 6524
1-HLCA1D1/1.1T-1	HLCA1D1 1.1T	1.1t	0%	150%	0.0285%	1.94mV/V	TC 6524
1-HLCA1D1/1.76T-1	HLCA1D1 1.76T	1.76t	0%	150%	0.0285%	1.94mV/V	TC 6524
1-HLCA1C3/550KG-1	HLCA1C3 550KG	550kg	0%	150%	0.009%	1.94mV/V	TC 6524
1-HLCA1C3/1.1T-1	HLCA1C3 1.1T	1.1t	0%	150%	0.009%	1.94mV/V	TC 6524
1-HLCA1C3/1.76T-1	HLCA1C3 1.76T	1.76t	0%	150%	0.010%	1.94mV/V	TC 6524
1-HLCB1D1/550KG-1	HLCB1D1 550KG	550kg	0%	150%	0.0285%	1.94mV/V	TC 6524
1-HLCB1D1/1.1T-1	HLCB1D1 1.1T	1.1t	0%	150%	0.0285%	1.94mV/V	TC 6524
1-HLCB1D1/1.76T-1	HLCB1D1 1.76T	1.76t	0%	150%	0.0285%	1.94mV/V	TC 6524
1-HLCB1C3/550KG-1	HLCB1C3 550KG	550kg	0%	150%	0.009%	1.94mV/V	TC 6524
1-HLCB1C3/1.1T-1	HLCB1C3 1.1T	1.1t	0%	150%	0.009%	1.94mV/V	TC 6524
1-HLCB1C3/1.76T-1	HLCB1C3 1.76T	1.76t	0%	150%	0.010%	1.94mV/V	TC 6524

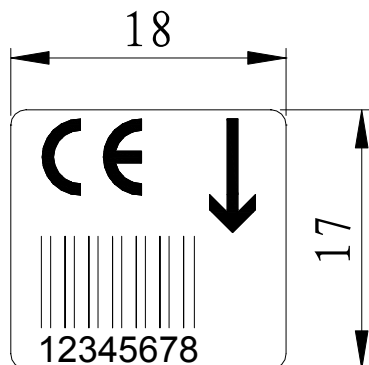
253700-7003EA

Page -4-

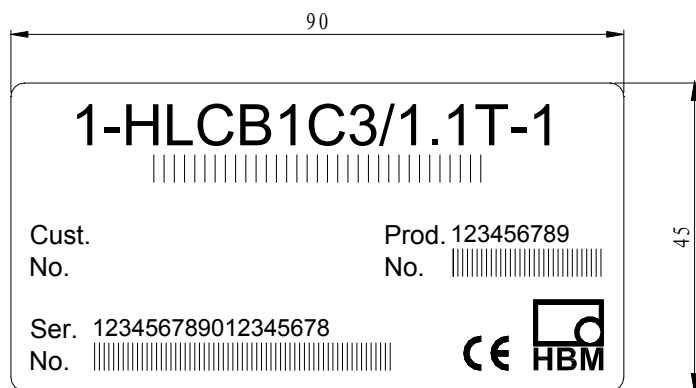
Vers.: b Ausg.: 25356

Date:2005-12-20

4.2 Serial number label (according to drawing No.: 530.00-3073.4 LO2-2)



4.3 Individual package label



Type	SAP Part Number
HLCA1D1/550KG	1-HLCA1D1/550KG-1
HLCA1D1/1.1T	1-HLCA1D1/1.1T-1
HLCA1D1/1.76T	1-HLCA1D1/1.76T-1
HLCA1C3/550KG	1-HLCA1C3/550KG-1
HLCA1C3/1.1T	1-HLCA1C3/1.1T-1
HLCA1C3/1.76T	1-HLCA1C3/1.76T-1
HLCB1D1/550KG	1-HLCB1D1/550KG-1
HLCB1D1/1.1T	1-HLCB1D1/1.1T-1
HLCB1D1/1.76T	1-HLCB1D1/1.76T-1
HLCB1C3/550KG	1-HLCB1C3/550KG-1
HLCB1C3/1.1T	1-HLCB1C3/1.1T-1
HLCB1C3 /1.76T	1-HLCB1C3/1.76T-1

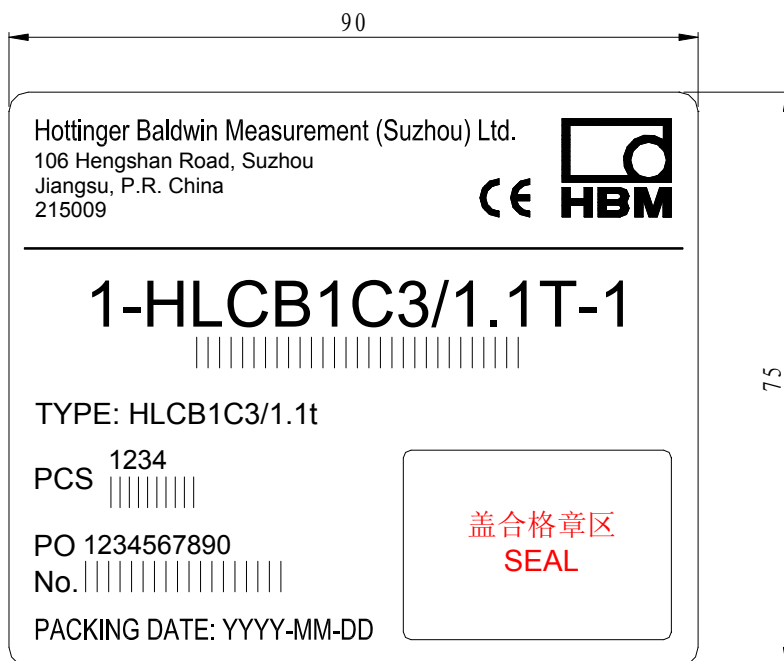
253700-7003EA

Page -5-

Vers.: b Aug.: 25356

Date:2005-12-20

4.4 Outer package label



Part Number	TYPE
1-HLCA1C3/550KG-1	HLCA1C3/550kg
1-HLCA1C3/1.1T-1	HLCA1C3/1.1t
1-HLCA1C3/1.76T-1	HLCA1C3/1.76t
1-HLCA1D1/550KG-1	HLCA1D1/550kg
1-HLCA1D1/1.1T-1	HLCA1D1/1.1t
1-HLCA1D1/1.76T-1	HLCA1D1/1.76t
1-HLCB1C3/550KG-1	HLCB1C3/550kg
1-HLCB1C3/1.1T-1	HLCB1C3/1.1t
1-HLCB1C3/1.76T-1	HLCB 1C3/1.76t
1-HLCB1D1/550KG-1	HLCB1D1/550kg
1-HLCB1D1/1.1T-1	HLCB1D1/1.1t
1-HLCB1D1/1.76T-1	HLCB1D1/1.76t

编制:

审核:

批准:
253700-7003EA

Page -6-